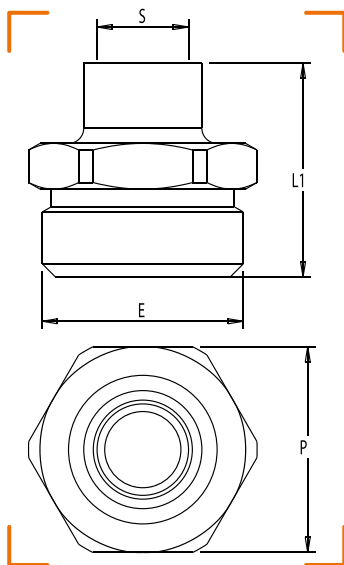










MAMELON DROIT MÂLE À JSC À BRASER SUR CUIVRE



CARACTÉRISTIQUES TECHNIQUES

Normes : NF E 29-536 / NF EN 1254-1

Température : -20°C à +60°C

CALIBRE	ENTRÉE MÂLE (E)	SORTIE CU (S)	COMPATIBLE AVEC RÉGULATEUR	L1	P	NF	RÉF.
15	JSC 3/4"	Cu Ø 12	B6 / B10 / B25 / BCH 30	28	27		1560-002
15	JSC 3/4"	Cu Ø 16	B6 / B10 / B25 / BCH 30	34	27		1560-015
15	JSC 3/4"	Cu Ø 18	B6 / B10 / B25 / BCH 30	34	27		1560-054
25	JSC 1"1/4	Cu Ø 28	Du C40 AU BCH 120 (SAUF BCH 30N)	44	46		1560-057
32	JSC 1"1/2	Cu Ø 35		54	46		1560-060
50	JSC 2"1/4	Cu Ø 54		70	65		1560-063